

APPROPRIATORS CERTIFICATE

I, E. P. Ellison, being first duly sworn, do hereby certify that I am the President of THE DAVIS & WEBER COUNTIES CANAL CO. who did on August 12-1912, make an application to appropriate water from Weber River for Irrigation purposes: that said application is now on file in the State Engineers office as No 4816 and that these drawings, plats or maps, consisting of 13 sheets, being an index map and sheets numbered 0 to 11 both inclusive, are submitted to accompany the written proof of appropriation pertaining thereto.

Subscribed and sworn to before me this _____ day of _____ 1919

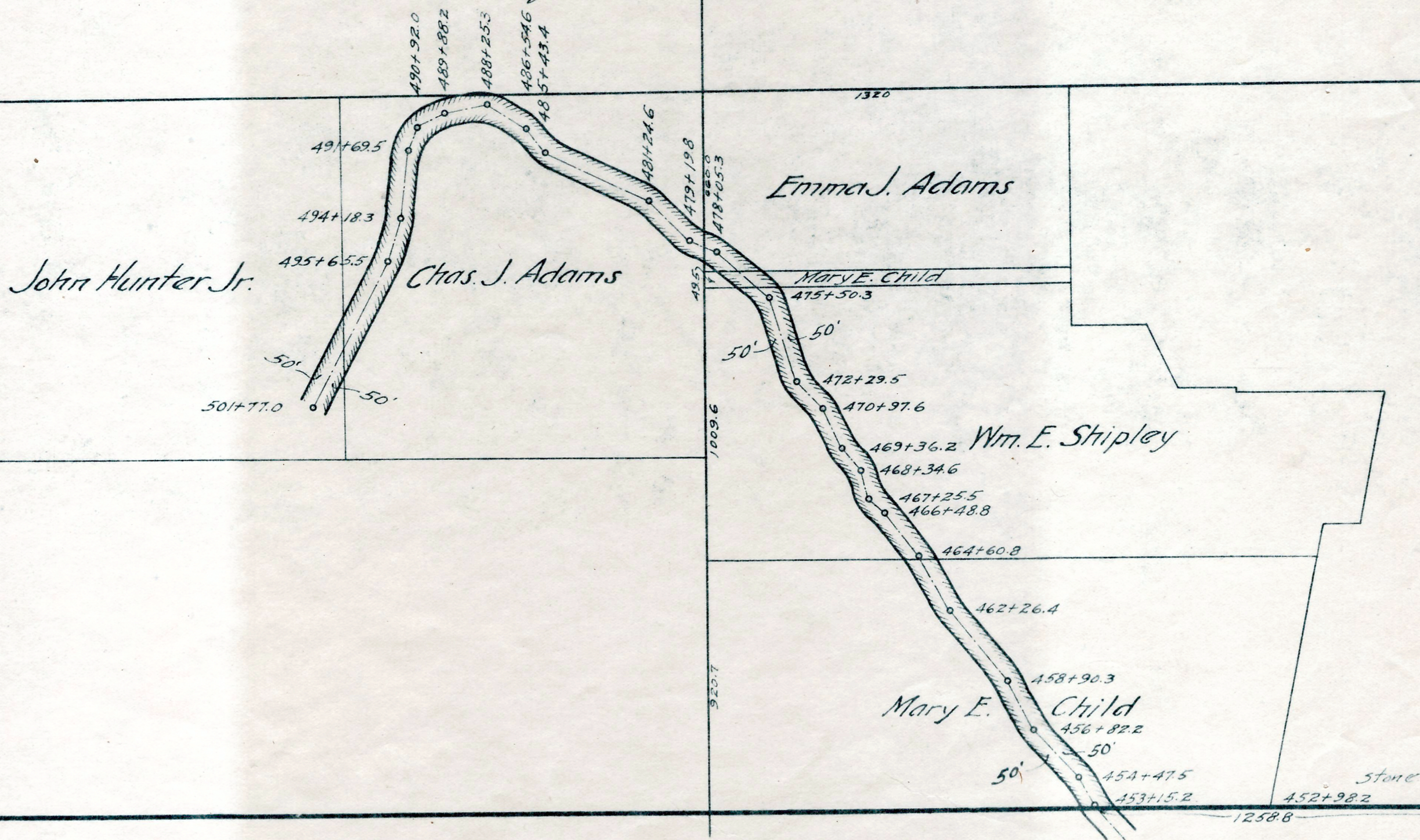
Notary Public

ENGINEER'S CERTIFICATE

I, A. F. Parker, a civil Engineer, being first duly sworn, do hereby certify that this map, comprising 13 sheets, being an index map and sheets numbered from 0 to 11 inclusive, is a true copy of a map of the Main Canal of the Davis and Weber Counties Canal Company prepared by W. M. Bostaph, a civil engineer, and certified to by him on July 27-1912. That, to the best of my knowledge and belief, the same truly represents the present location of the said Main Canal.

Subscribed and sworn to before me this _____ day of _____ 19__

Notary Public



SECTION 13 - T.5N. R.2W. S.L.M.